



System Infra Solutions Pvt. Ltd.
Solutions for life time...

The Leader of Intelligent Automation System



- ★ Intelligent Parking Lot System
- ★ Intelligent License Plate Recognition System
- ★ Intelligent Parking Management System
- ★ Intelligent Access Control Turnstile

SYSTEM INFRA SOLUTIONS PVT. LTD.

Address : Plot 382, 3rd Floor, Patparganj, Industrial Area, Patparganj, Delhi-110092

Phone : 01135004142, 01135004143

E-mail : care@sysinfra.in

Web : www.sysinfra.in



▲ COMPANY PROFILE

System Infra Solution Pvt. Ltd. was found on 2000, Is the intelligent system solutions and management systems equipment professional R & D, manufacturer and suppliers. Products include Intelligent Parking cloud systems, intelligent license plate recognition systems, smart Turnstile access control system, intelligent consumer systems, intelligent anti-static system, ID card and Face recognition 2 in 1 system. We are serving pan India.

Putting clients on the most important position is our concept and leading the industry and innovate the technology are our goal, We stick to the tenet as “the finest credit, the best quality, the excellent service”, hold the spirit of “united, honesty, creative”, warmly welcome all the friends comes form all over the world to develop and negotiate together!



Expertise in Site Survey

- Telecom Tower Solutions
- Electrical Installations
- Fibre Optic Cable Laying
- Communication System Installation
- Earthing Work
- Solar Solutions

Solution Offering

- Toll Management System
- Parking Management System
- Intelligent Traffic Solution
- Annual maintenance Contract
- Stack Car Parking
- Consulting

Our Expertise in Telecom Sector

- AMF Panel
- Low Cost IPMS
- DC Energy Meter
- AC Energy Meter
- Battery Health Monitoring System
- Alarm Monitoring System
- Retrofit Controller
- Freecooling Uit Aviation Controller
- Telecom Shelter Repair & Maintenance

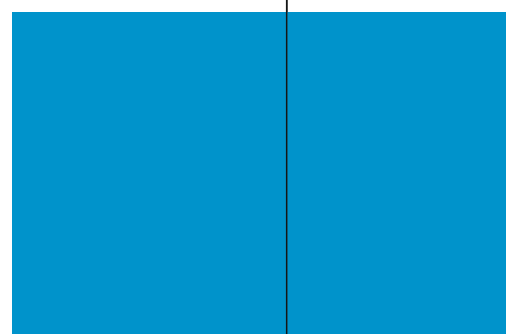
Our Expertise in Security & Automation System

- Toll Management System
- Smart Parking system
- Highway Traffic management solution
- Intelligent management system (ITS)
- ANPR * UVSS integrated solution
- Perimeter protection systems
- Access management system
- Digital information system
- Automatic boom barrier
- Stack parking system DC
- Flap barrier
- Tripod system
- Fire alarm management system
- Automatic sliding gate
- Automatic swing gate
- Parking management system



MANUFACTURING SCALE

With advanced manufacturing equipment
With advanced production line in the world



- Self development
- Self manufacturing
- Self installation
- Self post-sales service

We are trying to producing
the best product during
every single link

Intelligent Parking Lot System



The smart parking lot industry has entered a period of rapid development in recent years, and the traditional parking lot system has been unable to meet the diverse needs of consumers. From traditional single entrance control to today's automatic parking, license plate recognition, unmanned charges, and so on. The development trend of intelligent parking lots has the following aspects:

1. Network sharing data, breaking information islands, building smart parking Internet of Things platform, enabling parking guidance, parking space reservation, electronic automatic payment, fast access and other cloud parking functions
2. The unmanned service is gradually popularized, the labor cost is increasing, the human tactics are outdated, the participation of

smart phones and mobile Internet, the future smart parking lot must be highly unmanned management.

3. Traditional card-to-license recognition, simplifying and simplifying, gradually abandoning the habit of the owner to enter and leave the card, to achieve automatic identification of the license plate, improve efficiency, avoid multiple users using the same card, and other issues.

The development of smart parking lots in is getting better and better, and the whole day is on the rise. Pressing technology as the leader in the technology of parking lot industry has always kept close to the market demand, and the products are new and stand on the top of industry development.

Five Major Selling Points of Anxia License Plate Recognition

1. Hardware identification:

that is, it is completely different in the camera, and then the recognized license plate information is transmitted to the software for comparison analysis;

2. Digital network camera integrated machine:

that is, camera photo recognition module is combined, easy to install and maintain;

3. The monthly car can be used offline:

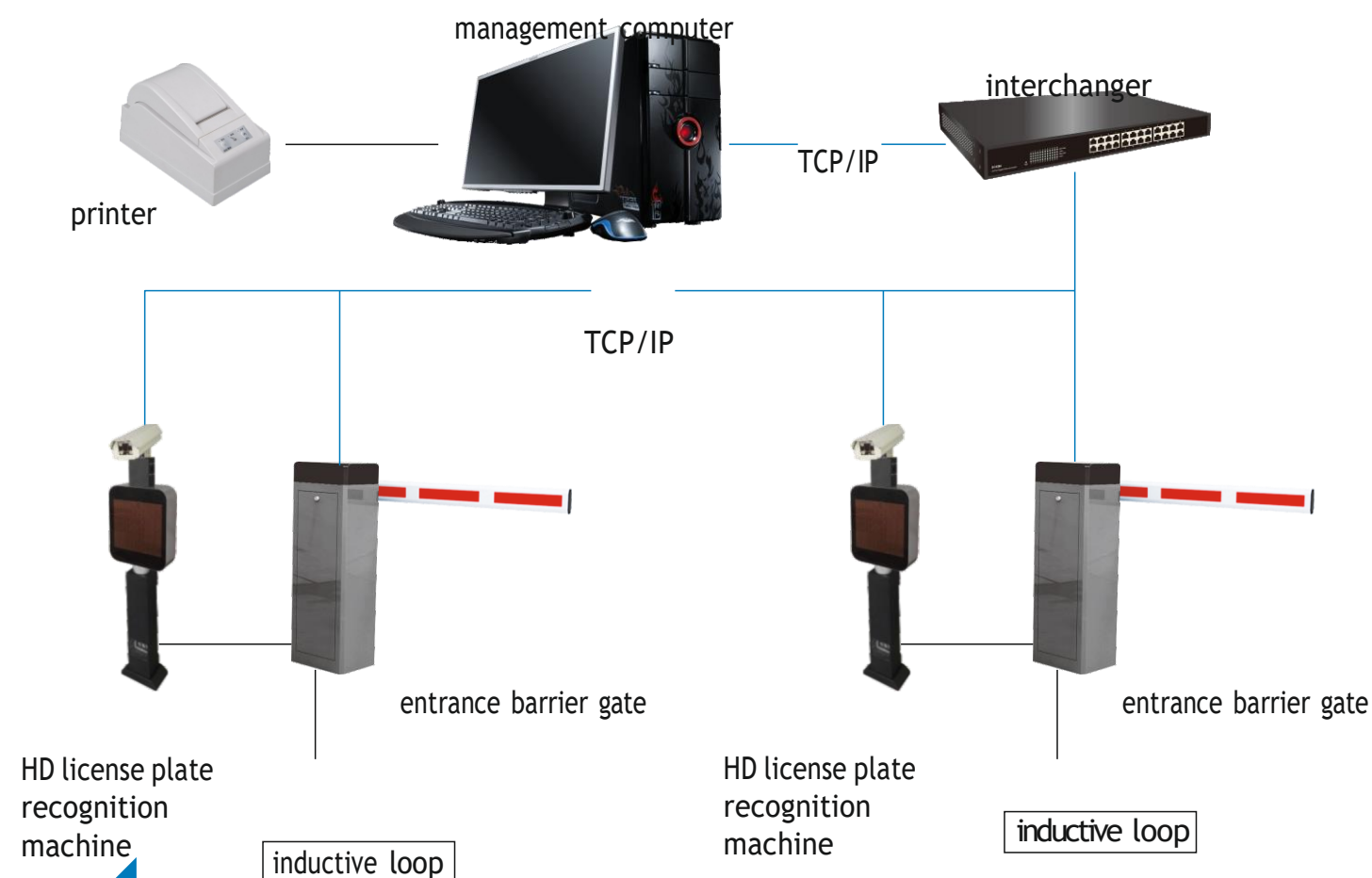
there is a storage chip, which can transfer the information of the monthly car to the one machine. It is very convenient without a computer, especially convenient for units or communities without temporary vehicles;

4. High recognition rate:

the recognition rate of license plate recognition system developed by our company is over 99%;

5. Virtual sense of ground:

Topological Graph



no need to change the sense of the ground, but through the software virtual one license plate recognition area, you can achieve the real sense of the effect, greatly reducing the construction difficulty.



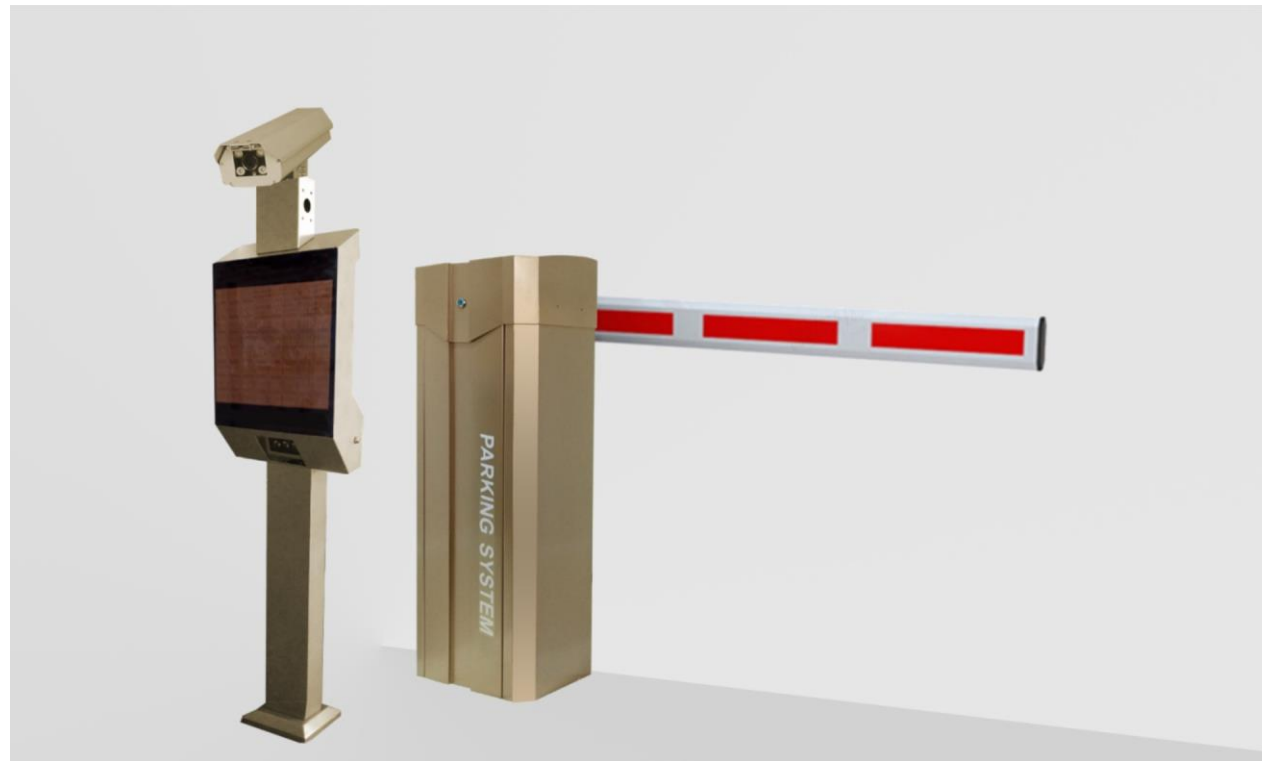
License Plate Recognition System With Boom Barrier

A type

B type

C type

Golden Color



License plate recognition system with boom barrier (D type)

Main Function:

1. Integrated HD license plate recognition, recognition rate >99.99%
2. Integrated parking controller, charging, display, voice, switch
3. Integrate 4 lines and 4 words to display large screen, display identification vehicle information, and publish advertisements
4. Integrated highlight fill light
5. Support TTS universal voice broadcast, users can set personalized voice
6. Support tcp communication
7. The display can be rotated 30 degrees left and right
8. Multi-punch waterproof, dustproof, anti-shake design, user safety and peace of mind
9. Highly integrated (only one power supply, one communication line, one open brake line)
10. Appearance is noble, stylish, atmospheric

Silver Color



License plate recognition system with boom barrier (E type)

Parameter Description:

Operating voltage: AC 220 V
Working environment temperature: -25 ° C - 60 ° C Relative humidity: <=95%
Communication interface: Rs 485
Longest communication distance: 1200 meters



License plate recognition system with boom barrier (A type)

Main Function:

- 1. Four-layer outdoor waterproof, dustproof, release display large screen
- 2. Integrated parking control panel, voice version
- 3. Open the gate, display, voice integration
- 4. Display 2 lines and 8 words
- 5. Support 220V household electricity
- 6. Support 485, TCP communication at the same time

Parameter Description:

Working voltage: AC 220V
 Working environment temperature: -25 ° C - 60 ° C
 Relative humidity: <=95% Communication interface: Rs485 Longest communication distance: 1200 meters



License plate recognition system with boom barrier (C type)

Main Function:

Display type: double layer (8 words), single layer (2 words).
 Effects: Immediate display, scrolling from right to left, automatic line feed display, scroll up display.
 Display mode: text display, clock display Size: 163*40*20.

Main Function:

- 1. Integrated HD license plate recognition, recognition rate >99%
- 2. Integrated parking controller, charging, display, voice, switch
- 3. Integrate 4-line 4-word large screen, display and identify vehicle information, and publish advertisements
- 4. Integrated highlight fill light
- 5. Support TTS universal voice broadcast, can set personalized voice
- 6. Support TCP communication
- 7. The display can be rotated 30 degrees left and right
- 8. Multiple waterproof, dust-proof, anti-shake design, user safety and peace of mind
- 9. Appearance is noble, stylish, atmospheric time



License plate recognition system with boom barrier (B type)

Parameter Description:

Working voltage: AC 220V
 Working environment temperature: -25 ° C - 60 ° C Relative humidity: <=95%
 Communication interface: Rs 485
 Longest communication distance: 1200 meters

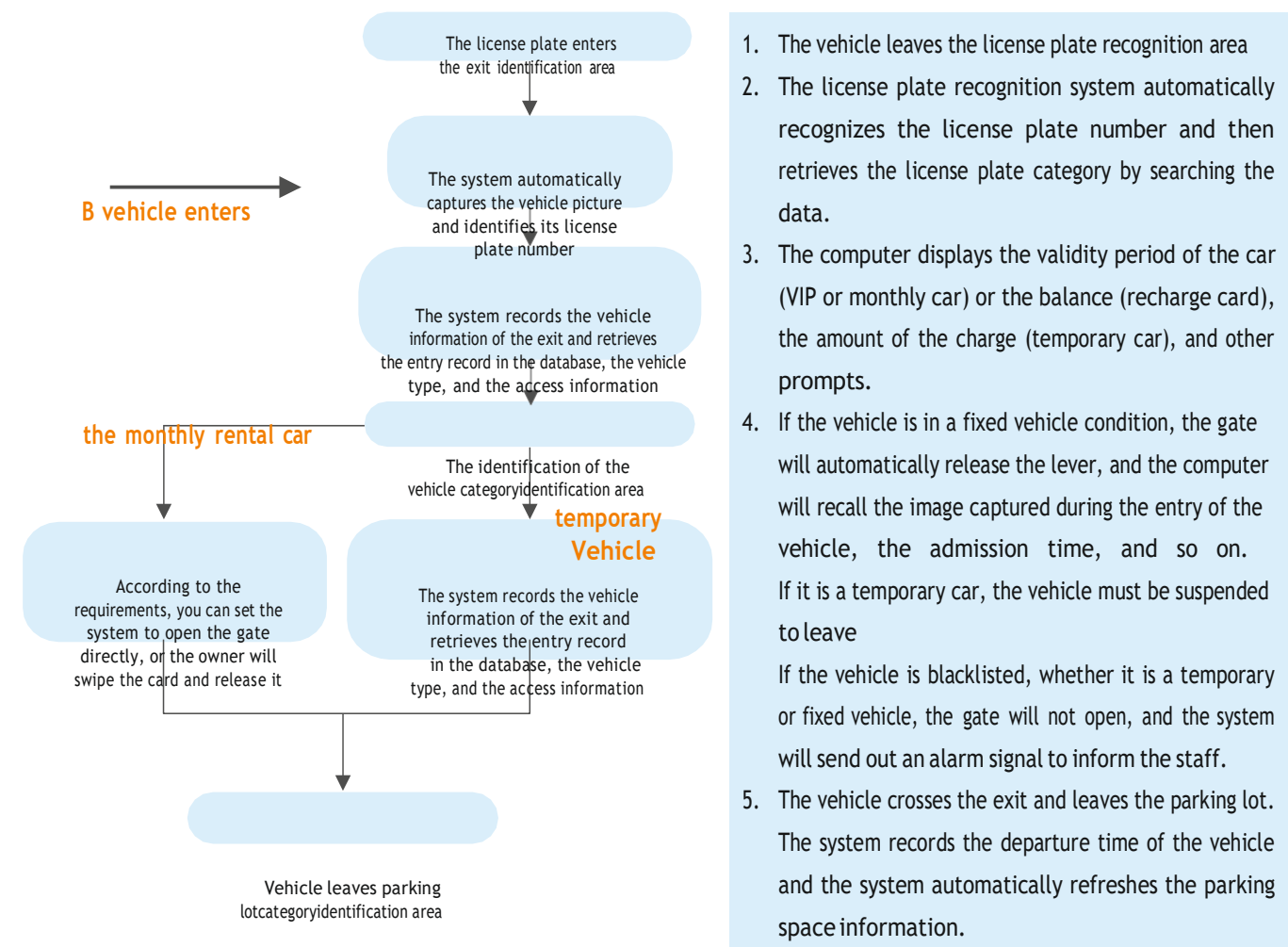
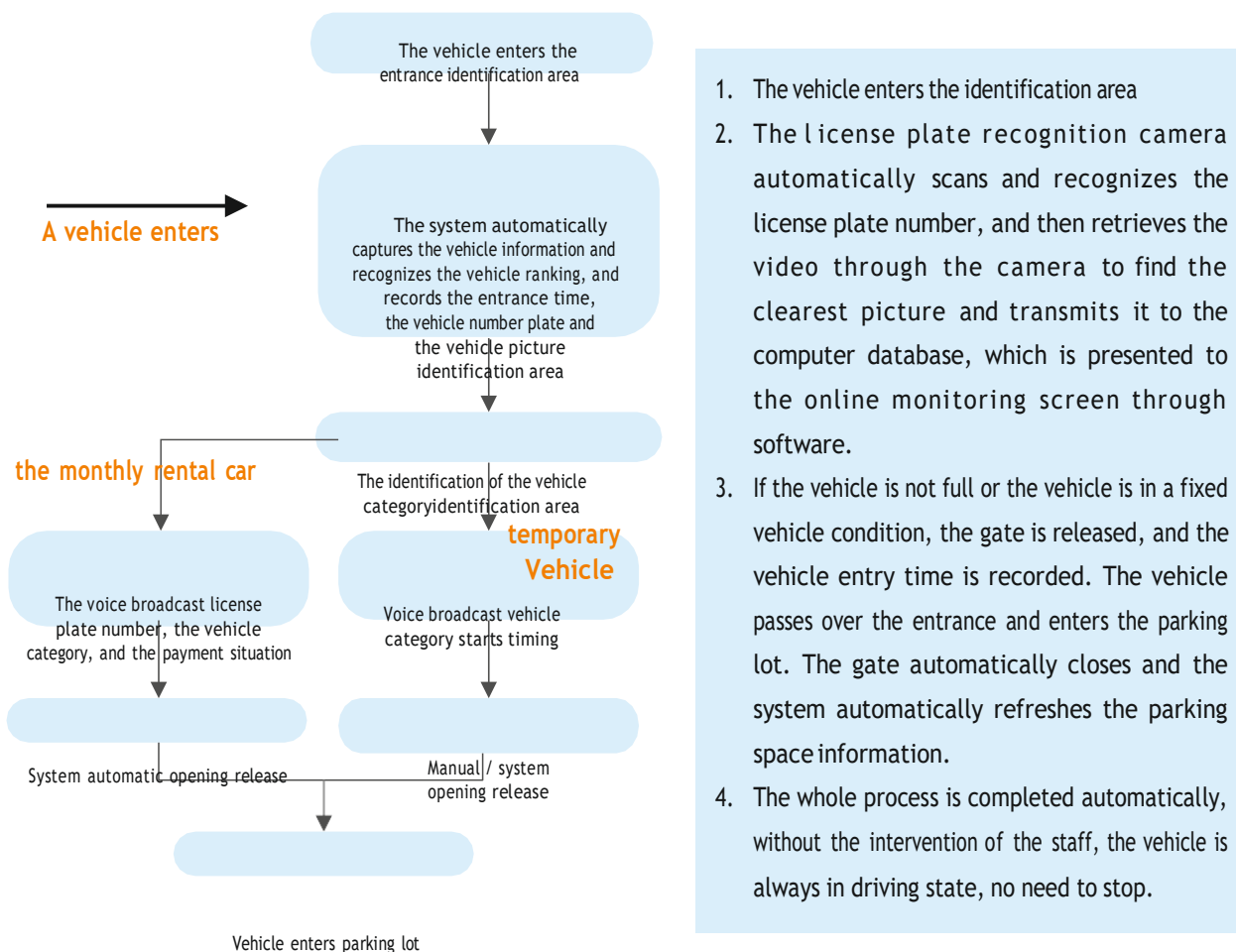
Main Feature:

Display type: double layer (8 words), single layer (2 words)
 Effects: Immediate display, scrolling from right to left, automatic line feed display, scroll up display
 Display mode: text display, clock display Size: 163*40*20

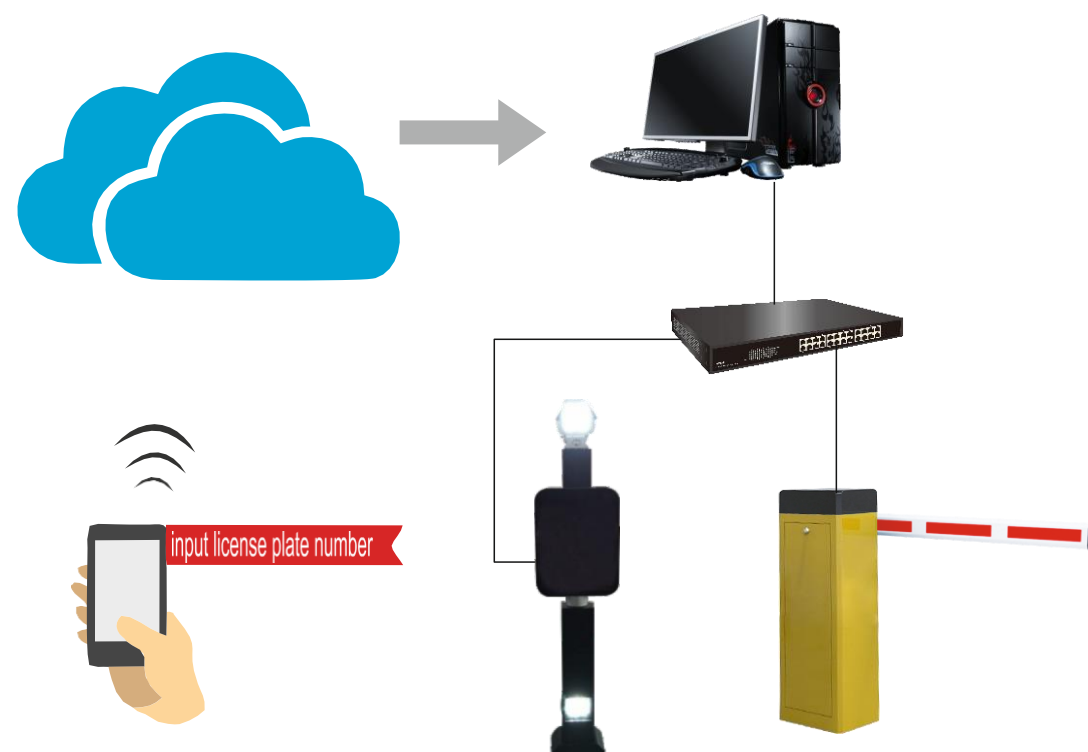


License plate recognition system with boom barrier (F type)

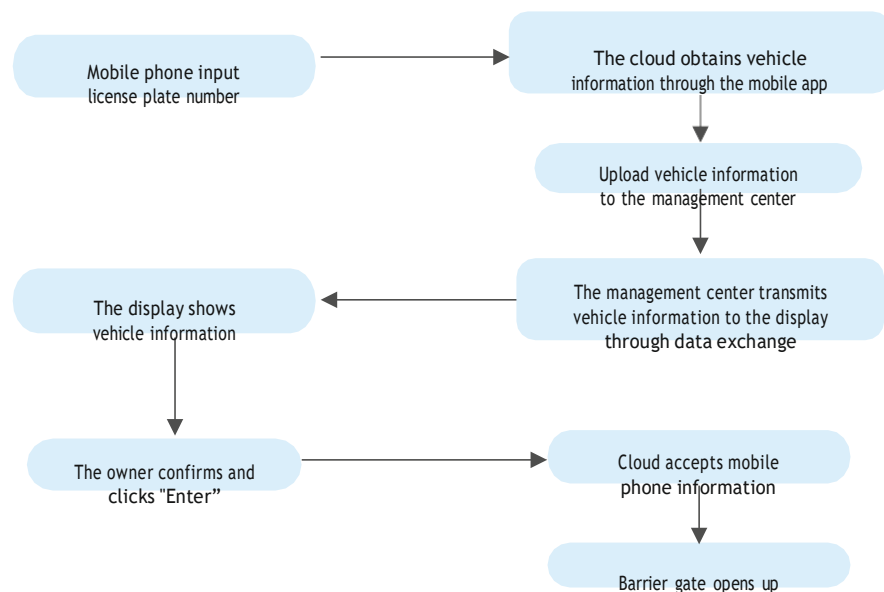
License Plate Recognition System Flow Chart



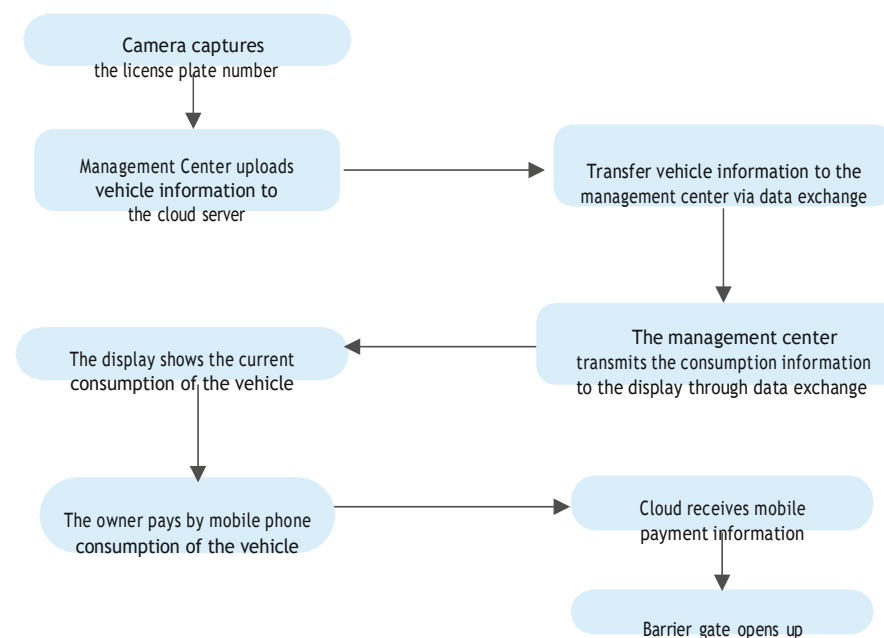
Intelligent Cloud Parking System



Vehicle entry process



Vehicle entry process

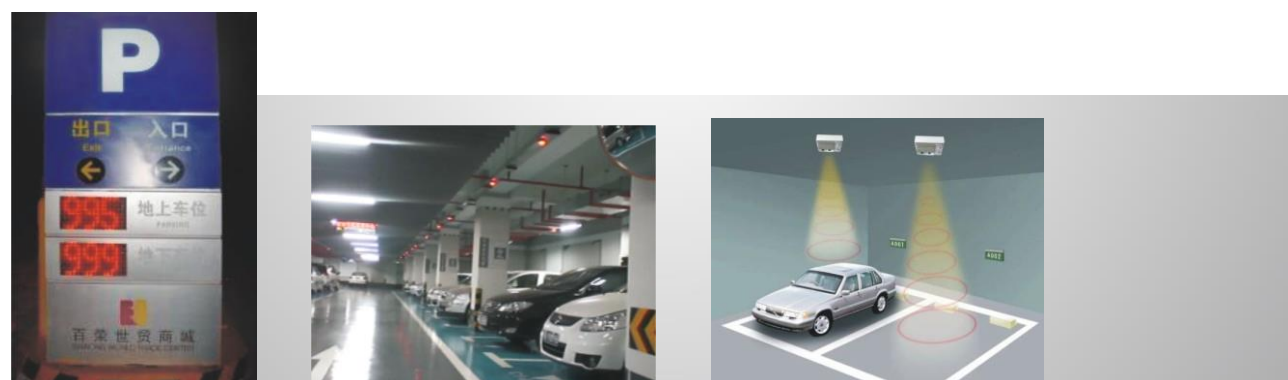
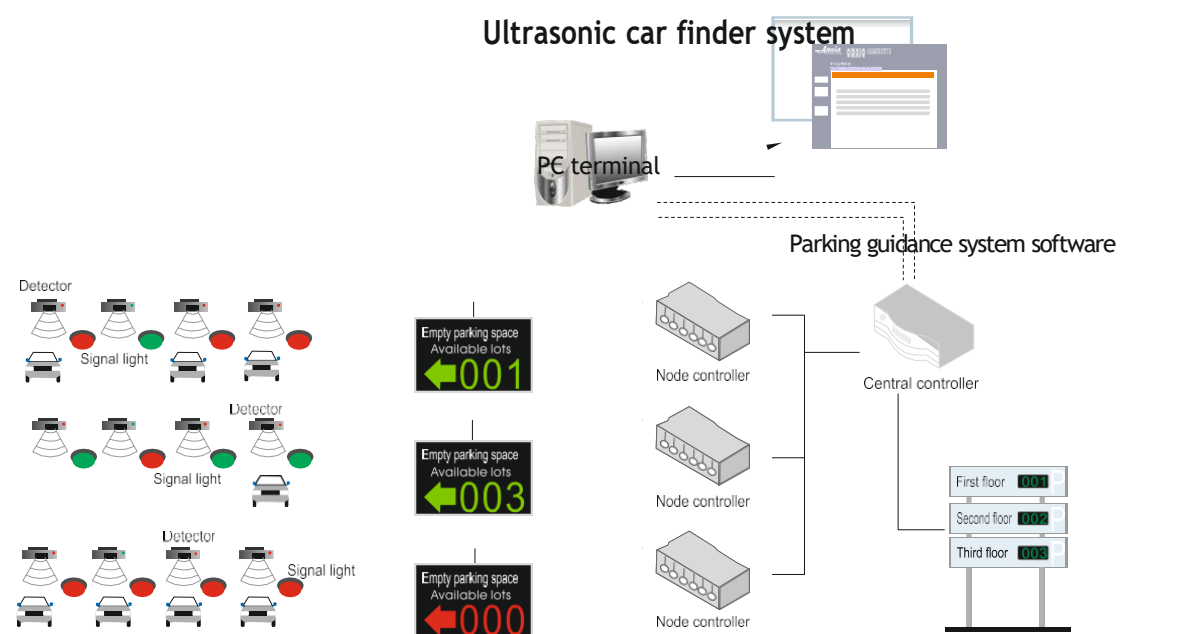


Parking Guidance System

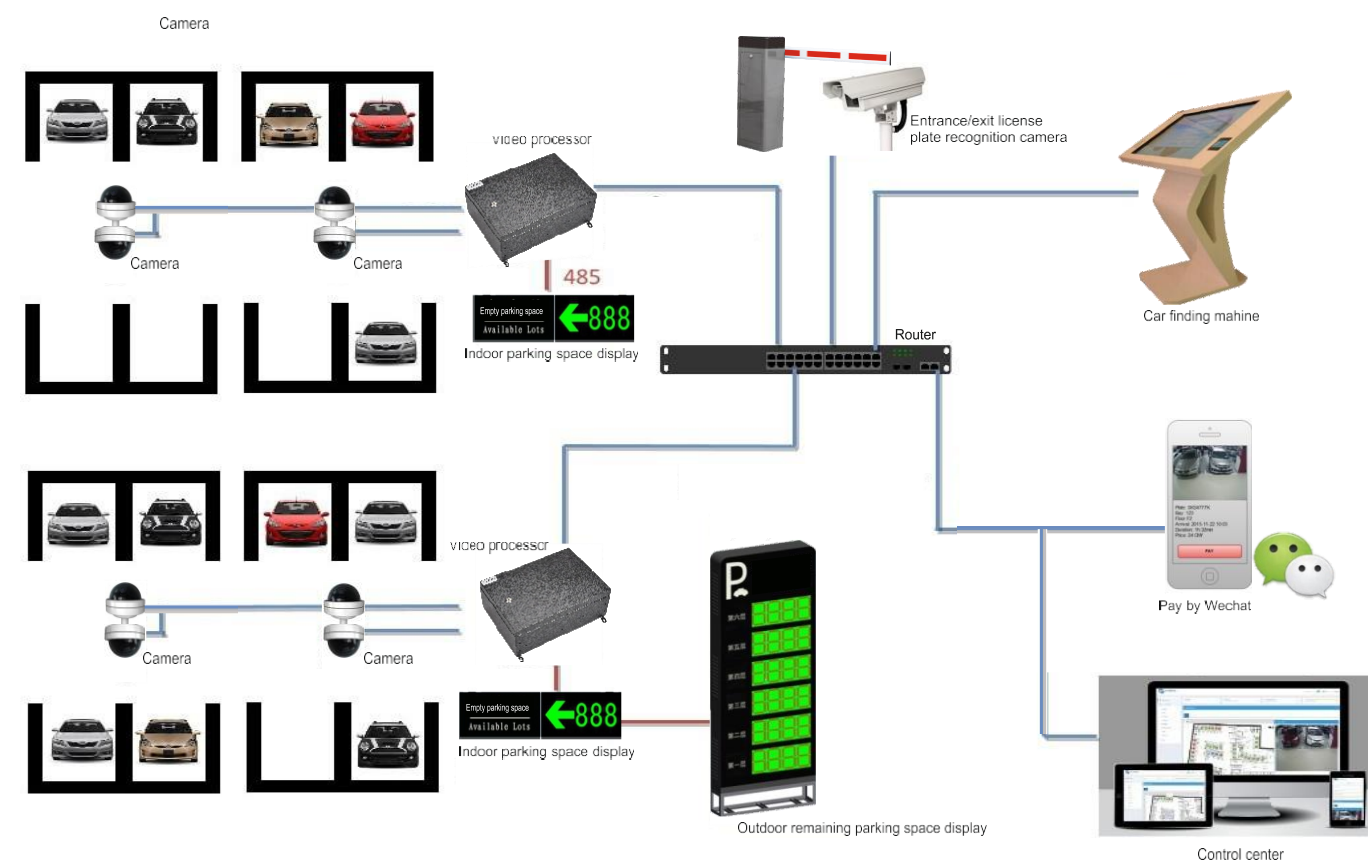
Advantages of Parking Space Guidance System

1. With the parking lot of the Anxia parking space guidance system, the driver can find the empty parking space accurately and safely through the eye-catching guide screen.
2. Improve the utilization rate of parking lots, better manage parking lots, reduce the operating costs of large and medium-sized parking lots, and greatly improve social and economic benefits. Eliminate parking troubles for customers, easy parking, save time and improve efficiency. It is one of the necessary systems for advanced parking, and it is a comprehensive manifestation of strength.
3. The parking guidance system is fully humanized from the nuances, making the parking management level even further.

Functional Schematic



Video Car Search System



Car Searching Terminal

- ◆ Check the parking position of the vehicle according to the license plate number or parking time to avoid searching for your own vehicle for a long time.
- ◆ Improve customer satisfaction, thereby improving customer return rate
- ◆ Because of reducing the time for finding vehicles, it improves the turnover rate of parking lots and improves the turnover rate of parking spaces.



Intelligent Parking Lot

Cool Blue Series



Optional colors   
red orange gray

System Features

1. It can be combined with the in/out card reader at the same time, and the fixed vehicle can realize the non-stop card reading and manage it more scientifically.
2. Real-time dynamic monitoring equipment, real-time monitoring of the status of the card machine and the number of stored cards, and display on the screen
3. The security of funds, the system records illegal incidents (such as automatic opening, manual opening, etc.), can be monitored, effectively avoiding the loss of funds due to negligence or intentional cheating of the duty officer
4. Can be offline, off-network operation, the system can still work normally in the case of network or computer failure; when the computer and network are repaired, the offline records in the control will be automatically uploaded to the computer for saving, effectively Guarantee system runs 24 hours a day
5. Other expansion functions: support central charging function, automatic license plate recognition (car and card binding)

Sharp Arrow Series



Optional colors   
red orange gray

System Features










1. Support a variety of readers: IC card, EM card (remote card reader)
2. When a card is bound to a car, the vehicle can be set to do not repeat the card reading function. When the vehicle reads the card, the card cannot be read repeatedly. The vehicle must leave the gate and close the channel, and the subsequent vehicle can read the card.
3. Real-time dynamic monitoring device, real-time detection of the working status of the machine and the number of stored cards, and display on the screen
4. Can be offline, off-network operation, the system can still work normally in the case of network or computer failure; when the computer and network are repaired, the offline records in the control will be automatically uploaded to the computer for saving, effectively Guarantee system runs 24 hours a day
5. Other expansion functions: support central charging function, automatic license plate recognition (car and card binding).

Advertising Door

Product Description

The pedestrian channel advertising door is a new product integrating traditional iron gates and advertising light boxes. Advertising doors are suitable for: residential areas, scenic spots, commercial centers, stations, etc.



 <p>Automatic door (double door)</p>	 	<p>The automatic built-in drive clicks and uses the gear set to decelerate, which can rotate 180 degrees forward and backward, and the left and right open doors are not restricted. According to the scene, you can change the position of the magnetic lock at will. Automatic control system, stable operation and good stability.</p>
 <p>Manual type (single open door)</p>	 	<p>Manual type, using the door closer to control the direction of the switch, by adjusting the door closer pressure reducing valve, it can smoothly slow down the door opening effect.</p>
 <p>Telescopic type (freely adjust the width of the door)</p>	 	<p>The telescopic section adopts a telescopic structure of the door body, and can flexibly adjust 50 cm according to the width of the channel, and the middle gap portion can be correspondingly increased/decreased.</p>

Regardless of manual type, automatic type, and telescopic type, it can control the identity of incoming

and outgoing personnel, and can be combined with the access control system to increase safety

Product Features

Product Features

Low consumption, standby power less than 6W, working power 45W Ultra-quiet, the noise is lower than 55db when working

High strength, can withstand 200kg pull

Support multiple signal inputs, relay signals, voltage signals (5-24V)

Current overcurrent, overvoltage, overload, short circuit protection Intelligent resistance, push the door to flip

Motor current, thrust, speed can be precisely adjusted

The intelligent access door is an automatic door controlled by an electromagnetic lock.

The door body adopts outdoor environmental protection and anti-rust treatment, anticorrosion, anti-collision, high-end appearance, and improve the community level.

The motor drive of the advertising door is fine, low energy consumption, superior performance, standby power less than 6W, working power 45W

Use double-sided tempered glass light box advertisement, easy and quick to disassemble and replace, more energy-saving and energy-saving

Access control system module design, good stability, strong function, support a variety of door opening methods: password, IC card, remote control, etc.

Low noise, long service life, ultra-quiet, less than 55db when working

The double-sided screen is close to 1 square meter, and the LED light source is evenly illuminated to attract the eye.

Advertising Barrier Gate

Product Description

Advertising gate is a unique and used high-quality new media. It refers to special alloy plane advertising carriers hanging on the gates of urban real estate, community, Shangxia, hotels, parking lots, etc.



Product Parameters

Product model: AX-DS-B0

Center height of upper beam: 1050 mm

Working voltage: 220V±10%/50Hz

Remote control distance: ≤30m

Input interface: +12V level signal or

Operating ambient temperature: -25 ° C ~ 60 ° C

Communication interface: RS485 electrical standard

Relative humidity: less than or equal to 95%

Outer box dimensions: 850x420x1300 mm

Road gate length: 2.5m, 2.8m, 3.2m, 3.5m, 3.7m

Chassis screen size: 500mm x 1000mm

Replica screen size: 2150 x 830mm, 2450 x 830mm, 2860 x 830mm, 3100 x 830mm

Lifting time: generally 4 seconds (special requirements can be customized)



Standard model (powered type)



Simple style (no power type)

The standard model (powered type) uses the electric drive to pass the motor inside the brake lever. The brake dry motor is connected to the advertising gate drive shaft. Before the landing gear, the brake motor drives the motor to rotate the advertising surface to 90.

Degree again. This kind of traditional operation using the motor to pull the flap can increase the anemometer, battery, and drive battery, so that the advertising gate can more play more features and performance is more prominent.

The simple type (no power type) uses mechanical transmission (no power drive), and the lever is turned over again. The mechanical operation mode, each component is work alone, the installation and maintenance are relatively simple, the landing speed is about 2 seconds faster than the motor drive, and there is a problem with one blade, which will not affect the overall operation.

Main Features

1. The chassis is durable and waterproof, and can be used in outdoor environments.
2. The shape is simple and generous, the light box with the best perspective is in the advertising space, the layout is detachable and the operation is simple.
3. Chassis advertising light box has fixed screen, scrolling screen, LCD screen playing three, a variety of options.
4. Advertising light box and flip board are equipped with LED lights, turn off the lights during the day, turn on the lights at night, adjust the time period, save energy and save energy
5. Easy to operate, flexible, safe and reliable
6. A variety of control modes are available for the user to select, and the external control box button can be used to realize the manual control of the gate, and the remote control device can also be selected to remotely control the gate.
7. The use of multiple protection measures (wind protection, motor thermal protection, anti-surge protection, anti-lightning protection), the safety and reliability of the gate operation is greatly improved.
8. In addition to the general interface gull, the system adds other protective equipment such as air pressure waves, so that the system has anti-mite function.
9. It has the function of "automatically falling off the car after the car has passed" and "automatic lifting of the lever when the vehicle passes" to improve the automatic closing function.
10. Has a directional function to effectively improve vehicle efficiency
11. The system uses a standard electrical interface to facilitate connection with other systems selected by the user.
12. All moving parts have been adjusted to the best balance, stable operation, low noise and long service life.



High-speed Barrier Gate

AX-G307



Optional color orange yellow gray

Performance Characteristics

The operation mode is manual or remote control, accepting the card signal lifting, combined with the ground sense coil; The pole lift is gentle and reliable, and the adjustable time is 1.5-6 seconds;

The unique manual clutch device is light and compact, and the pole can stay at any angle; Made of pure copper movement; Infrared sensor anti-tamper function; Support external and built-in sense; With a time-delay function;

Fast heat dissipation to prevent crashes due to overheating of the movement;

The shape of the chassis is treated with a special process to reach the highest level in the industry.

AX-G308



Optional color red blue gray

Technical Parameters

Power supply voltage: 220V/±% Voltage frequency: 50/60Hz Rated power: 90W

No-load speed of the motor: 1400 rpm

Self-contained pole with resistance rebound function

Traffic light interface: (220VAC) Remote control distance: ≥ 30 meters

Rod length: within 6 meters, within 5 meters of folding rod

Rod material: aluminum alloy Chassis size: 350 x 280 x 1060mm

Pole size: 100 x 45 m

Average number of failures: greater than or equal to 3 million times

RS485 interface optional

The following types of lever gates are available: Folding arm (1-5m)

Fence pole (1-5m)

Technical Parameters

Standard color: orange, gray

Chassis size: 350x350x1050 mm

Can be equipped with: octagonal pole below 4 meters

Speed: 1.5-4 seconds

Ambient temperature: -25°C-60°C

Relative humidity: 5%-95% Voltage: 200V/50Hz

Remote control distance: 30m

Dimensions: 405x292x1019mm

Installation size: 235x235x172mm

Power: 150W | Gate center height: 880mm | Gate type: standard straight rod

Communication protocol: RS-485 interface, up to 1200 meters

Working power supply: AC220V±10%V (50Hz)

AX-G306



High-speed Gate Performance Characteristics

Turbo drive, simple structure, durable, stable and reliable

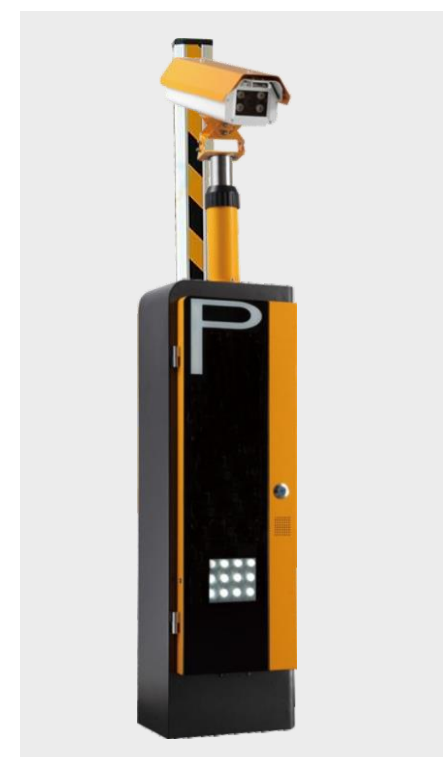
State-of-the-art balancing mechanism ensures smooth, balanced operation Modular design, standard terminal block output strong and weak electrical partition separation, full circuit non-contact control, ensuring reliable operation

An anti-mite control system is added to ensure the safety of the vehicle, and the emergency department is manually lifted and lowered;

Control input/output sections use optocoupler relays to block electrical shock The gate lift time is only 1.5 seconds

3 million service life, no pollution, no wear, no need for lubricant maintenance

The ground sense coil controls the automatic drop lever after the vehicle has been tested, and has the function of preventing the brake.



Gate Identification Integrated Machine

Technical Parameters

Size: 1780 * 340 * 280 mm

Voice prompt: collected voice by real human

Data communication: Ethernet communication interface

Words display mode: scroll up/scroll down / horizontal scroll

Digit display mode: 4 digits

LED light attenuation: ≤5%/10000hour (25°C, current: 20mA) Installation angle: adjustable

LED visual angle: ±35°* ±20°

LED average life span: ≥50000 hours

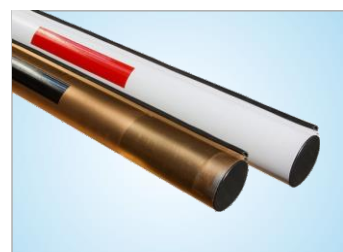
Input voltage: AC 200- 250V, 50Hz

Working temperature: -20 - 65°C



Housing Parameter

Housing material: stainless steel with varnish stoving
Working temperature: AC220V ±10%, 50 Hz
Motor type/ rated power: DC variable frequency motor/140 W
Life span: ≥ 2 million times
Torque: 70 N*m
Running time: 1 - 6 seconds, adjustable
Housing size:350mm * 280mm * 1060mm
Working temperature: -40℃ ~75℃



Oval shape arm



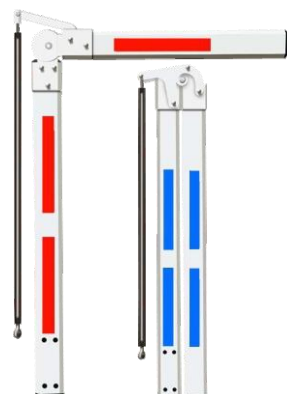
Octagon shape arm



Retractable arm



Barrier

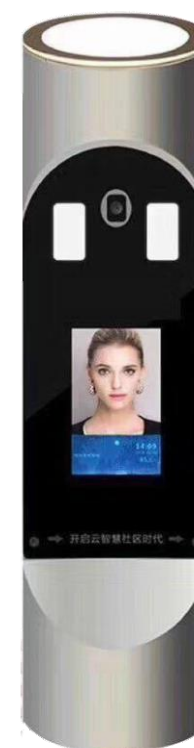


Folding arm

Arm Parameter

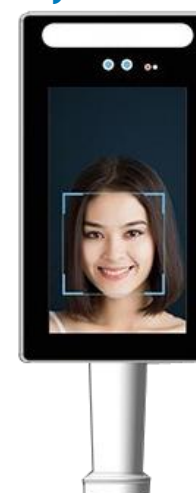
Arm shape: Oval/Octagon
Arm type: straight arm/ folding arm/ barrier
Color: red&white/ blue&whit/ black&yellow/ gold
Material: Aluminum alloy, with surface spray treatment
Arm length: 1 - 6 meters adjustable, 3 - 6 meters for(Retractable arm)
Thickness: 1.2 mm

Cylinder Face Recognition System



Screen	Size: 5 inch, 170°IPS Liquid Crystal Display Resolution: 480 * 854
Camera	Pixels: 2 mega pixels Type: RGB camera Aperture: F2.4 Focal length: 6 mm White balance: Automatic Wide Dynamic: Supports
Core Parameter	CPU: Quad Core, 1.8 GHz Device interface: RAM 2GB, storage capacity 8GB
Interface	Audio: 1 channel audio output Video: 1 channel HDMI 2.0 Type-A Serial communication interface: 1 RS232 Interface Relay output: 1 relay interface Reset interface: With RESET button on the extension cord Internet interface: 1 RJ45 10M/100M adaptable Ethernet interface
Function	Face detection: Support detecting/tracking 5 persons at the same time 1: N face recognition: When false recognition is 0.03%,Face recognition accuracy is 99.7% Stranger detection: Support Recognition distance configuration: Support UI interface configuration: Support Device remote upgrade: Support Deployment method: Support public network, LAN
General Parameters	Protection level: IP42, with a certain dust-proof /water-proof fuction Power supply: DC12V (± 10%) Working temperature: -10℃~60℃ Working humidity: 10%~90% Power: 10 W Max Device size: 560 *φ114mm (Height * Diameter) Weight: ≈ 5kg

Cylinder Face Recognition System



Product Features

1. Support for external large screen;
2. Dynamic double-camera identification for anti-counterfeiting, completely solving the deception of photos;
3. With night infrared, RGB light;
4. Support the insertion of 4G network card wireless Internet access;
5. Support the storage of 100,000 face photos, 1 million identification records;
6. Support 1:1 face comparison, and 1:N face recognition;
7. 1:N recognition accuracy is high, the face database is 10,000 (recommended face database is not higher than 10,000), there is only one in ten thousand false recognition Rate, passing rate is 97%, and 1:1 face recognition accuracy rate reaches 99.7%;
8. The recognition speed is fast, face tracking and detection takes about 20ms, face feature extraction takes about 200ms, face comparison takes about 0.1ms;
9. Support stranger detection, stranger's level can be configured;
10. Support the preservation of live photos when taking face recognition or stranger detection;
11. Support multiple deployment modes such as public cloud, private cloud and local area network;
12. Support the interface and support the building system;
13. Support identification distance configuration;
14. Support screen display content configuration.

Product Parameter

Housing material: aluminum alloy
 Size: 120mm*217mm
 Camera: 2 mega pixel HD imported camera
 Working temperature: -10 ° C - 60 ° C
 Working humidity: 10% to 90% | Power consumption: 10W
 Installation method: wall bracket installation, turnstile bracket installation

ght: infrared, LED light

System: Android
CPU: quad core 1.8GHZ
Display: 7-inch IPS LCD screen
Power: DC12V
Weight: = 2KG

Intelligent Channel Gate

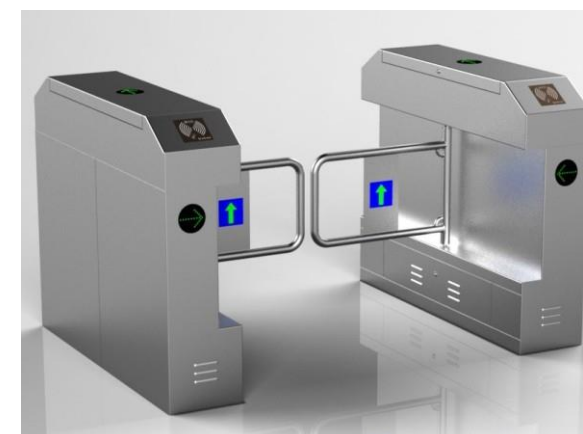
Speedy Turnstile



Features

1. Adopt industrial grade 32-bit ARM chip, fast response speed and greatly improved processing capacity
2. Using electromagnetic clutch device
3. Angle detection and control by angle encoder, greatly improving the accuracy of the swing angle
4. After swiping the card, the swing arm opens to prompt the pedestrian to pass. After the pedestrian passes, the swing arm automatically closes.
5. If the swing arm is not open, if the swing arm is forced into the swing, the swing arm swings beyond a certain angle and is immediately unlocked to avoid the break of the swing arm and the damage of the traditional swing gate.
6. Anti-reverse, after the card is swiped, only pedestrians are allowed to travel in one direction; if they pass in the opposite direction, an alarm will be issued, and in some cases the swing arm will close quickly.
7. The speed can be adjusted according to the requirements of different places. The switch used for adjustment is built in.
8. After obtaining the permission, if it does not pass within the set time, the access permission will be automatically canceled and the initial state will be restored.
9. Use several pairs of infrared probes to detect various travel states
After the power is cut off, the swing arm is in a state of no resistance

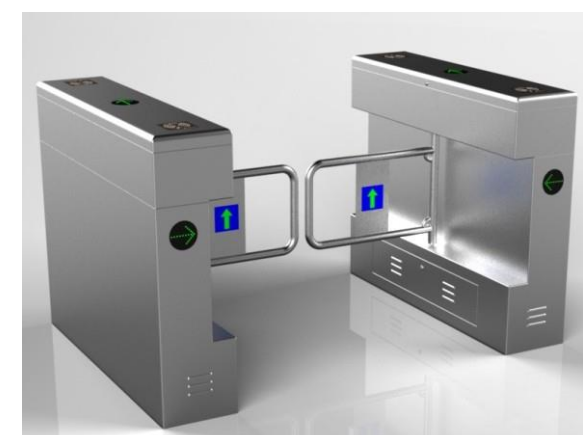
Swing Gate Series



Model: AX-B001
Channel width: ≤900 mm
Size: 1200 x 280 x 990 mm



Model: AX-B005
Channel width: ≤900 mm
Size: 1200 x 280 x 990 mm



Model: AX-B003
Channel width: ≤900 mm
Size: 1200 x 280 x 990 mm



Model: AX-B006
Channel width: ≤900 mm
Size: Φ168 x 600 x 1050 mm

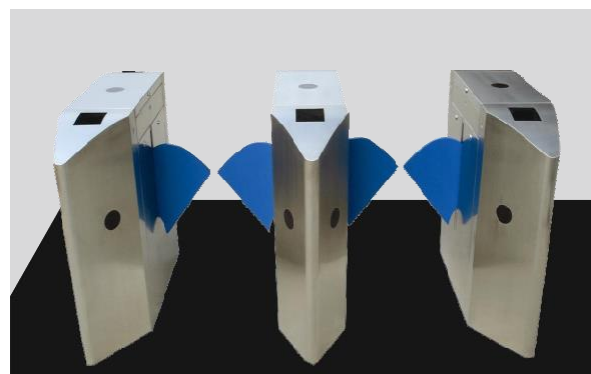
Features

1. Use IC card, ID card, magnetic card or barcode card as automatic identification system to realize access control, attendance or charging function
2. With fault self-test and broadcast function, it greatly facilitates the maintenance and use of equipment.
3. With normally open and normally closed working mode
4. With card memory, why not with memory, users can set online
5. With automatic reset function, after the card is read, when the pedestrian does not pass the time specified by the system, the system automatically passes the permission this time, and the reset time value can be set online.
6. With direction indicator, display the current status of the channel to pedestrians, guide pedestrians correctly, and quickly pass
7. After the system is powered off, the manual opening function is that the channel gate is open and the barrier-free state is formed.
8. Several pairs of infrared probes are used to detect various travel states, protect pedestrians from passing smoothly, and have anti-tailing function.
9. Can be used in the same system as other styles of channel gates
10. It has a unified and standard external electrical interface, which can be connected with other reading and writing devices for easy integration and remote control and management through management computer.

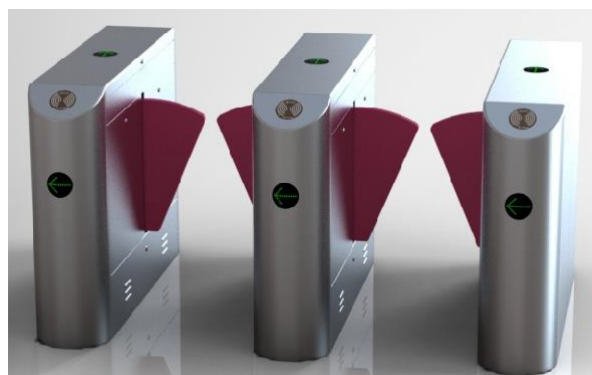
Wing Turnstile Series



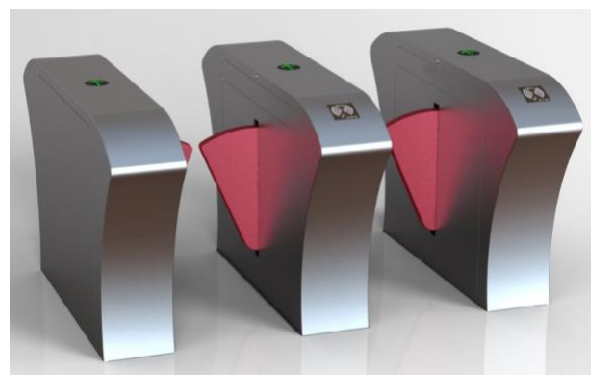
Model: AX-Y002
Channel width: ≤600 mm
Size: 1200 x 280 x 990 mm



Model: AX-Y001
Channel width: ≤600 mm
Size: 1200 x 280 x 990 mm



Model: AX-Y007
Channel width: ≤600 mm
Size: 1200 x 280 x 990 mm



Model: AX-Y008
Channel width: ≤600 mm
Size: 1200 x 280 x 990 mm

Turnstile Parameter

Structure: 304# stainless steel frame structure and sprayed plastic case

Turning of the gate: one-way / two-way

Anti-reverse: with anti-reverse function to ensure one card per person

Power supply: AC198V-248V, 50Hz±4%, Output: AC24V, DC12V

Machine consumption: less than 30W when working

Outdoor: It is recommended to have a ceiling above the gate. When the relative humidity of the environment is less than 45%, the relevant maintenance staff should wear an anti-static wrist strap to open the chassis.

Passing speed: 35-45 person/minute Machine life: 10 years (not consumables)

Maintenance port: 1

Net weight of gate: 100kg (excluding control equipment)

Tripod Turnstile



Model: AX-S005
Channel width: ≤ 600 mm
Size: 1200 x 280 x 990 mm



Model: AX-S003
Channel width: ≤ 600 mm
Size: 1200 x 280 x 990 mm



Model : AX-S001
Channel width : ≤600 mm
Size : 420 x 330 x 980 mm

Features

Use IC card, ID card, magnetic card or barcode card as automatic identification to achieve access control, attendance or charging function

With fault self-test and broadcast function, it is convenient to maintain and use equipment With normally open and normally closed working mode

With card memory, and without memory function, users can set online

With automatic reset function, after the card is read, when the pedestrian is in the time specified by the system, the system automatically cancels the access permission, and the reset time can be set.

With direction indicator, I want the pedestrian to display the current status of the channel, guiding pedestrians to pass quickly.

With anti-tailing function, organize pedestrians to enter illegally Can be used in the same system with other styles of channel gates

It has a unified and standard external electrical interface, which can be connected with other reading and writing devices for easy integration and remote control and management through the management computer.

FeatuaTechnical Parametersres

Channel width: single pendulum ≤ 600 mm

Power supply voltage: AC220±10%V, 50Hz

Working environment humidity: -15 ° C - 60 ° C, indoors, outdoor use

Inspection port: one

Passing speed: 30 person/minute, gate opening/closing time: 1.2 seconds

Flap Turnstile Series



Model: AX-PY001
Channel width: ≤600
Size: 1200 x 330 x 990 mm



Model: AX-PY002
Channel width: ≤600
Size: 1200 x 330 x 990 mm

Features

With fault self-test and broadcast function, it is convenient to maintain and use equipment. The operating status of the programmable device is via the built-in keypad on the main control board.

Mechanical structure, induction anti-pinch function, when the telescopic arm is reset, it will stop automatically, or the motor will stop working within the default time and reset again after the default delay, and the force is very small (less than 2kg).

Anti-collision function, the wing door is automatically locked when no open signal is received.

After the power is cut off, the channel will automatically open and automatically close after power-on.

Remarks: Expandable functions: 1. Counting function 2. The chassis is lengthened, and the telescopic arm material can be selected.

Technical Parameters

Size: 1200x330x990 mm

Passing speed: 35 people / minute

Input voltage: 100V - 220V

Ambient temperature: -25°C ~ 70°C

Open brake signal input: 12V solder joint

Unlocking time: 0.2 s

Channel width: ≤600 mm

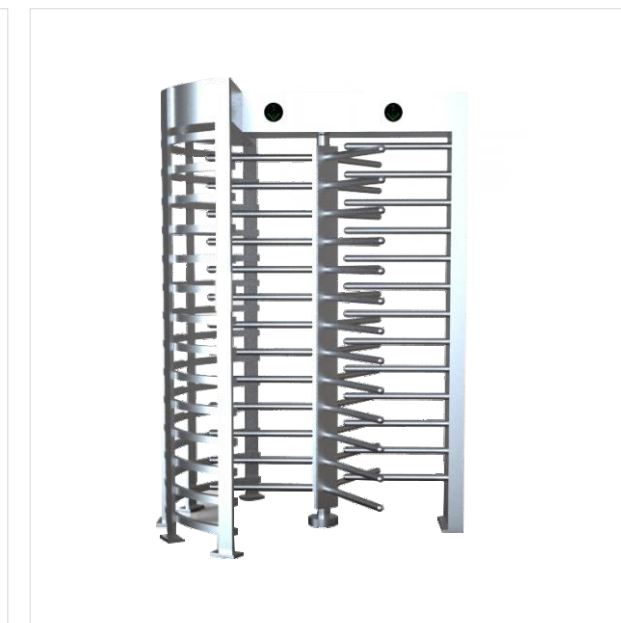
Drive voltage: 24V

Power: 30W

Half Height/ Full Height Turnstile



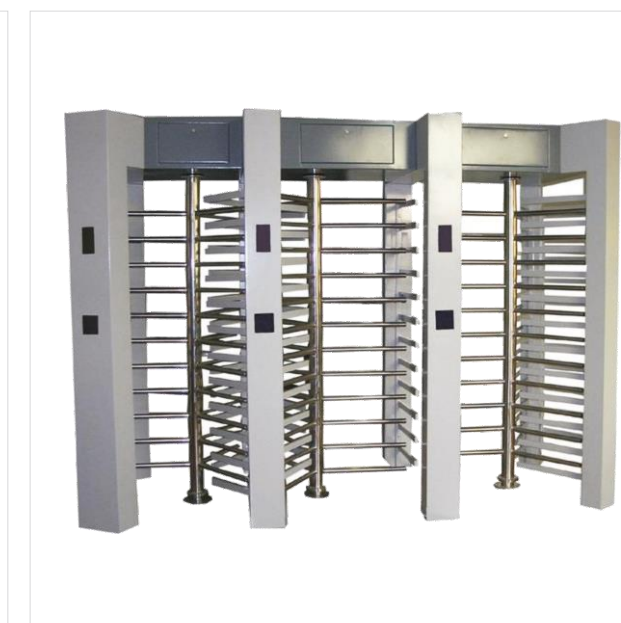
Model: AX-Z005
Channel width: ≤600
Size: 1400 x 1400 x 1200 mm



Model: AX-Z001
Channel width: ≤600
Size: 1630 x 1500 x 2300 mm



Model: AX-Z006
Channel width: ≤600
Size: 2450 x 1500 x 2300 mm



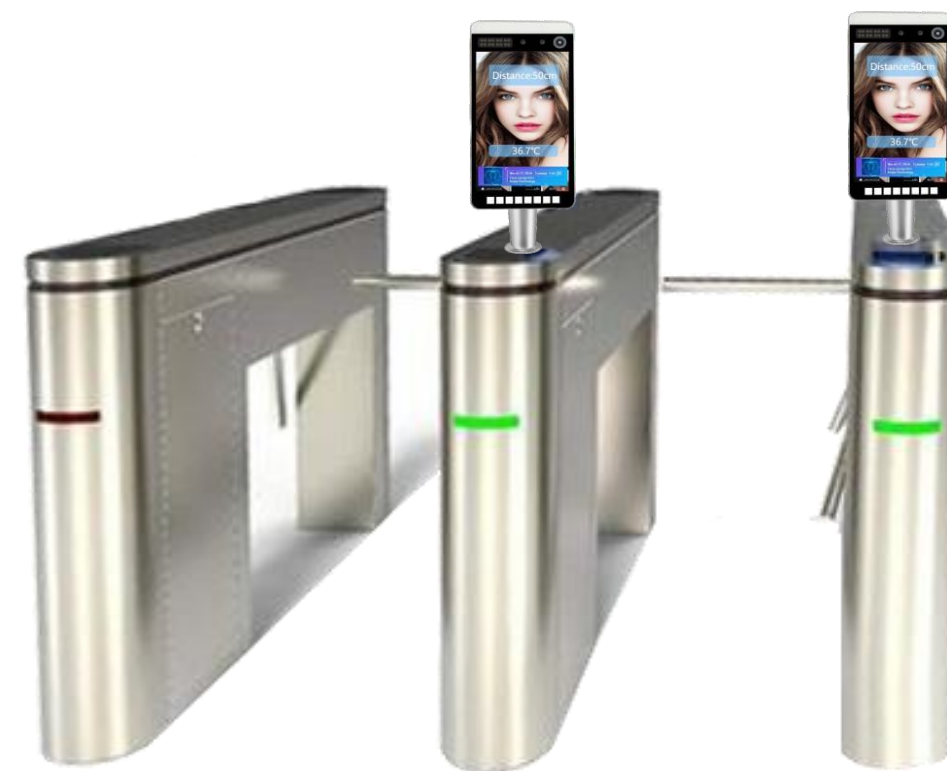
Model: AX-Z006
Channel width: ≤600
Size: 3300 x 1500 x 2300 mm

Temperature Measuring Face Recognition



Product Features

1. Support camera to capture face to activate device;
2. Human body temperature detection using thermal imaging; with access control attendance function;
3. Automatic alarm when human body temperature is higher than 37.3(customizable temperature value);
4. Using RGB and living body dynamic binocular camera; 5.Supports serial port, Wigan 26, 34 input and output; 6.Using video stream-based dynamic face detection,tracking recognition algorithm ;
7. Support device local storage of 10,000 face libraries; 8.When the face database is 3,000 , misrecognition rate is 3 in 10,000, 1: N recognition accuracy rate is 99.7%;
9. Fast recognition speed: (a) face tracking and detection takes about 20ms, (b) face feature extraction takes about 200ms, (c) face comparison takes about 0.2ms(1000 people database, multiple identification to get the average), 0.5ms(10,000 face database,multiple identification to get the average); 10.Binocular with infrared fill light camera;
11. Support live photo saving during face recognition or stranger detection;
12. Support HTTP Interface connection;
13. Support public network and local area network deployment;



Product Parameter

Screen size : 8 inch
Device size:240*120*24mm
Power supply:DC12V (±10%)
System:Android
Screen resolution:800*1028 HD screen
Operating temperature:-10-60°C
Working humidity:10%~90%

Temperature Measuring Gate

Product Parameter

Temperature detection tolerance: $\pm 0.5^{\circ}\text{C}$ (at room temperature)

Voltage: AC180V - 250V, 50-60HZ

Power: 200W

Net weight: 50kg

Inner frame dimension: 2000mm(H) \times 700mm(W) \times 500mm (d)

Outer frame dimension: 2270mm(H) \times 830mm(W) \times 500mm (d)

Carton package: 2220mm(H) \times 550mm(W) \times 320mm (d), 66kg

Wooden package: 2420mm(H) \times 750mm(W) \times 520mm (d), 95KG



Temperature Measuring Control box



Product Features

1. Non-contact, fast detection
2. Height can be adjusted
3. Plug and Play
4. Accurate and fast temperature measurement
5. Normal walking speed, easy and convenient
6. Real-time temperature display, sound & light alarm for high temp
7. reduce artificial temp, measurement to avoid cross-infection

Product Parameter

Temperature detection tolerance: $\pm 0.5^{\circ}\text{C}$ (at room temperature)

Voltage: AC180V - 250V, 50-60HZ

Power: 200W

Net weight: 5kg

Control box dimension: 340mm (H) \times 130mm (W) \times 55mm (d)

Carton package: 700mm (H) \times 300mm (W) \times 200mm (d), 7KG

Face Scan Body Temperature Detector



No.	Technical Parameters	Technical Parameters	
1	Camera Type/Aperture/Resolution	RGB+Infrared Sensor/4.0mm/200W	
2	Screen and Resolution	8-inch, full-view IPS LCD screen,1280*800,brightness 400cd	
3	User Management	Add/delete people on local apps	
4	1:N Face recognition	Support 1 in 10,000 mis-recognition rate, 99% pass rate	
5	Face Detection	Support simultaneous detection and tracking of 5 people	
6	Local (offline use)	Local 20000 face database	
7	Processor	CPU 4 core RK3299	
8	RAM	DDR3-4GB	
9	ISP	Image Processing-Built-in dual ISP	
10	Local storage	TF card-32GB	
11	IP level	IP64,support water-proof & dust-proof & outdoor use	
12	Device Interface	Equipment management, rights management, personnel/photo management, record query, etc.	
13	Certificate	CE Approved,ISO14001 · ISO9001 · OHSAS18001	
14	Wooden Case Size	1900*460*440mm, 26kg/66kg	
15	1:N Face recognition	Support 1 in 10,000 mis-recognition rate, 99% pass rate	
16	Wigan / RS232	Wigan format 26/34, RS232	
17	Working Environment	Temperature	-10~60 $^{\circ}\text{C}$
		Humidity	10%~90%(RH)
		Power	DC12V, 5W max
		Location	Indoor
18	Warranty	12 months	
19	Application	Train Station, School, Hospital, Office Building, etc.	

Thermal & Optical Bi-spectrum Network Bullet Camera



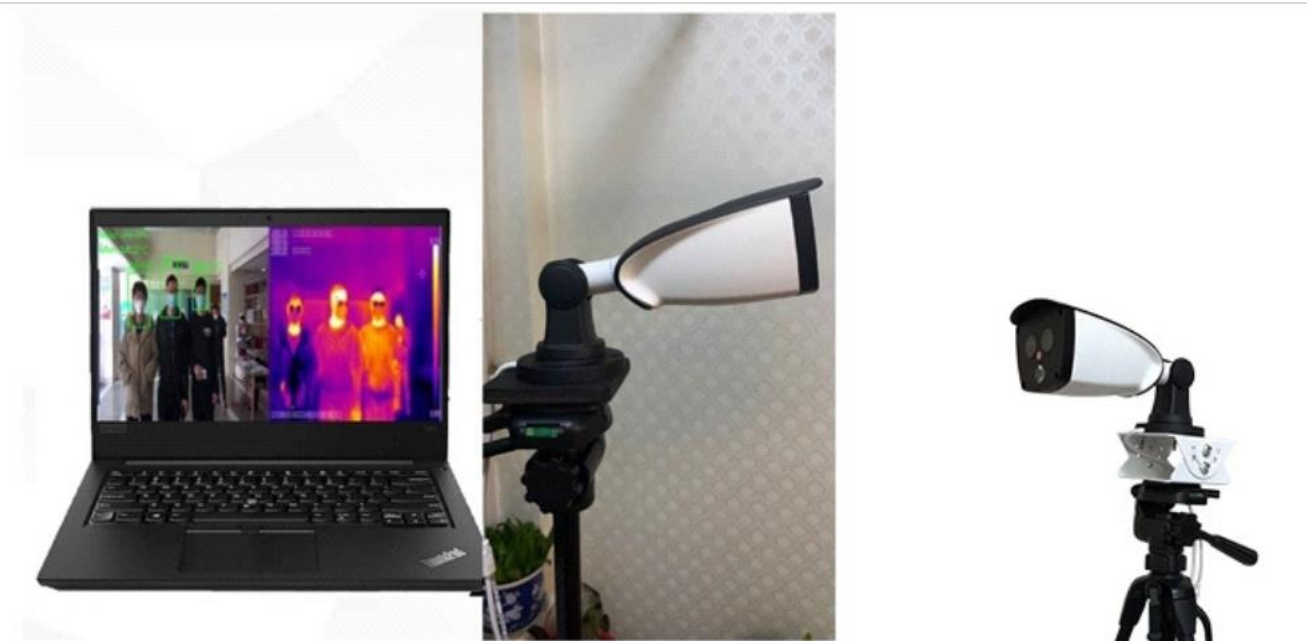
High sensitivity thermal module with 256 x 192 resolution NETD is less than 60 mk (@25° C, F#=1.0)
 Supports contrast adjustment
 Leading thermal image processing technology: Adaptive AGC, DDE, 3D DNR Up to 15 palettes of adjustable color
 Reliable temperature-anomaly alarm Temperature Range From -15° C to +150° C High quality optical module with 2 MP resolution
 Bi-spectrum image fusion, picture-in-picture preview



Specifications

Thermal	
Image Sensor	VOx Uncooled Focal Plane Arrays
Resolution	256×192
Pixel Interval	12μm
NETD	Less than 60 mK (@25 °C,F#=1.1)
Aperture	F1.0
Field of View	35° ×27° (H ×V)
Optical	
Image Sensor	1/2.8"2.0M Pixel CMOS
Resolution	1920×1080P
Min. Illumination	Color: 0.005Lux@ (F1.2, AGC ON), B/W:0.001 Lux @ (F1.2, AGC ON)
Field of View	84° ×45° (H ×V)
Focal Length	4mm
Shutter Speed	1s to 1/100,000s
White Balance	Auto/Manual/ATW(Auto-tracking White Balance)/Indoor/Outdoor/DaylightLamp/Sodium Lamp
Day & Night	ModelR cut filterwithauto switch
WDR	80dB
Feature	
Bi-spectrum Image Fusion	Fusion view of thermal view and overlaid details of the optical channel
Picture in Picture	Combines details of thermal and optical image PIP, overlay thermal image on optical image
Smart Function	
Face snapping	Built-in deep learning AI algorithm, Supports simultaneous detection of 20-30 faces
Temperature Measurement	Support global and local temperature
Temperature Range	From -15° C to +150° C
Temperature Accuracy	Target temperature 35° C ^ 38° C ±0.3 °C Target temperature 20° C ^ 33° C ±0.6 °C Target temperature 38° C ^ 50° C ±0.6 °C
Network	
Main Stream	Thermal: 25fps(1920×1080, 1280×720)
Sub Stream	Thermal: 25fps(704×576, 352×288)
Video Compression	H.264 (Baseline/Main/HighProfile) /MJPEG/H.265
Audio Compression	G.711u/G.711a/G.722.1/MP2L2/G.726/PCM
Protocols	TCP/IP, ONVIF, GB/T 28181,DHCP, RTP, RTSP, PPPoE, UPnP, UDP
API	ONVIF (Profile S, Profile G, Profile T), SDK
General	
Web Client Language	languages English, Chinese
Power	DC 12V, 0.65A
Work Temperature/Humidity	From -20° C to 55° C; Humidity:95% or Less
Protection Level	IP67
Dimension	246mm ×101 mm ×81 mm (with bracket)
Weight	Approx. 1.0 kg

Non-Contact Infrared Thermal Camera



- Automatically Image Acquisition
- Automatically Face Detection
- Automatically Face Mask Detection
- Automatically Face Recognition Comparison
- Automatically Body Temperature Detection
- Can be Used Outdoors
- Reach $\pm 0.1^{\circ}\text{C}$ High Precision Temperature Sensing
- Detection Distance Can Reach 5 Meters
- Multiple-Target Simultaneous Detection, Pass By 5 People Simultaneously
- Detect 160-200 People Per Minute
- Installation Can Be Completed In 10 Minutes
- Automatically Snap Shot For Abnormal Body Temperature



Applications



Traditional Temperature Measurement

- Human contact is too close, easy to cross infection

DISADVANTAGES

manual operation is required, which is time-consuming and inefficient
invest a lot of manpower and material resources to increase labor costs



Mercury Thermometer Electronic Thermometer Infrared Ear Thermometer Infrared Forehead Thermometer

The Infrared Thermal Camera uses the front-end visible light and infrared dual spectrum vanadium oxide focal plane high-precision temperature sensing probe, adopts the most advanced FLIR infrared chip technology from the United States, does not need the external black body, and is completed by the internal automatic calibration technology

The non-contact infrared thermal camera can be applied for the following places :

Government	√	Airport	√	Factories	√	Metro	√
Hospital	√	Train Station	√	School	√	Office Building	√
Enterprise	√	Bus Station	√	Supermarket	√	Exhibition	√
Custom	√Other Places					

Applications

1. It is not recommended to be used outdoors. Outdoor sunshine, wind and temperature difference will affect the temperature measurement accuracy. If you need to use outdoors, you can build a wind proof and heat preservation tent.
2. The temperature measuring equipment shall be used in the room with the room temperature between 10 °C - 40 °C. Do not install the temperature measuring equipment under the vent to ensure that there is no heat source within 3 meters.
3. Entering the room from the cold outdoor environment will affect the accuracy of temperature measurement, so it is necessary to conduct the forehead temperature test after the forehead is unobstructed for three minutes in the room and the temperature is stable.
4. The temperature read by the temperature measuring equipment is the temperature of the forehead temperature area. When there is water, sweat, oil or heavy makeup on the forehead or there are many wrinkles in the elderly, the temperature read will be lower than the actual temperature, so as to ensure that there is no hair or clothing in this area.

